

AULLY'S

 AULTMAN COLLEGE

Adventure

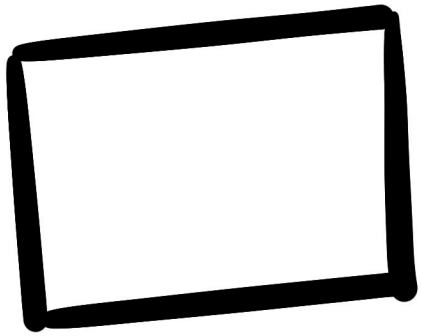
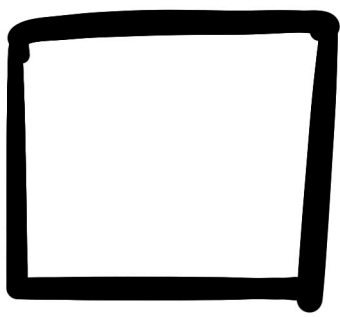
A coloring & activity book





Did you know owls have long been revered as a symbol of knowledge and learning?

I love the colors

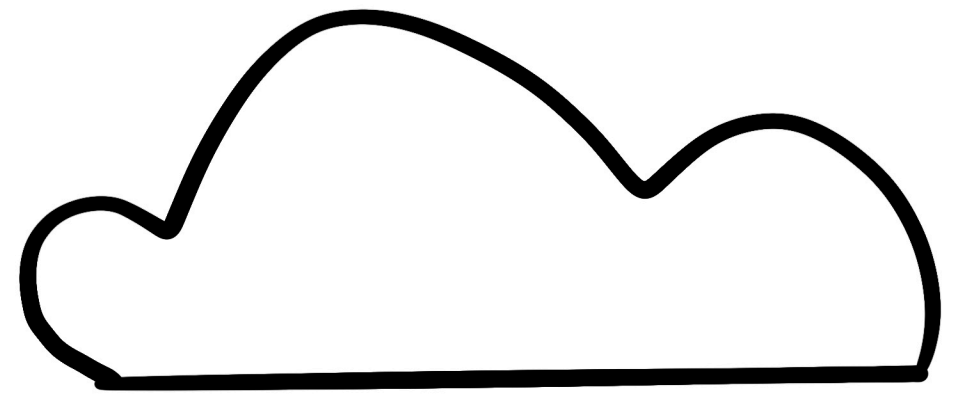


blue & green

I love studying
Owl-gebra in the
Student Success Center.

$$2022 - x = 1890$$

$$x = \underline{\hspace{2cm}}$$



I love helping and taking care of people.



CONGRATULATIONS
TREE HIGH SCHOOL
GRADUATES!

What do you want to do now that graduated high school?



I want to help people feel better, but I don't know where to start. I am going to visit Aultman College to learn more!



Hi Aully! Welcome to Aultman College! Let me tell you more about the ways you can help people feel better!



AULTMAN COLLEGE

Great!



AULLY'S DAY

Nursing

Sociodiography

Social Work

Health Sciences

Medical Assistant

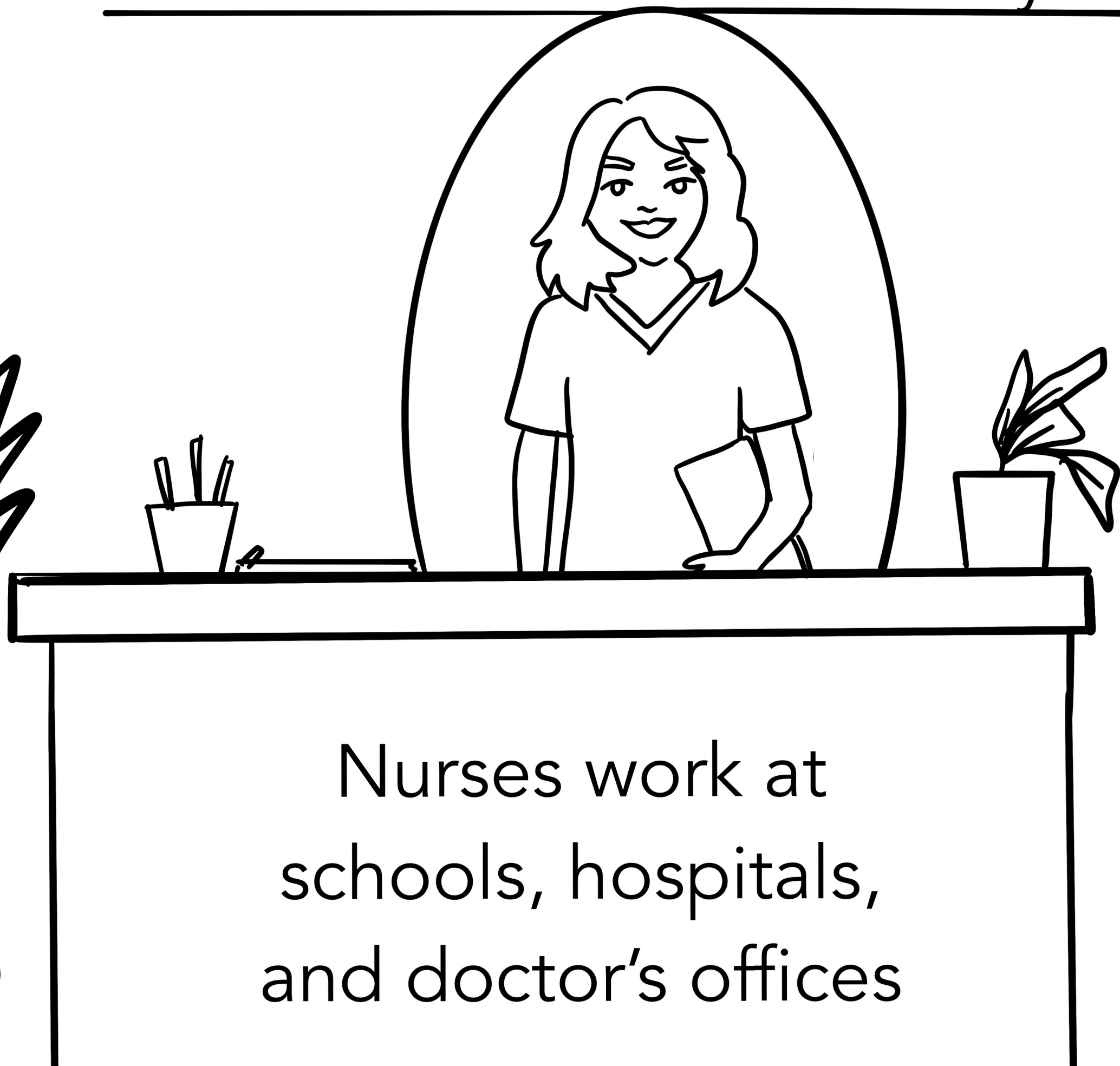
AULTA
CD



Nurses help sick people.



Nurses teach people how to be healthy



Nurses work at schools, hospitals, and doctor's offices

AULLY'S NURSING VOCABULARY

K Z E Y K Z S G T P K O V P V L K I V N W E Y W V B D B J N
Z W J G F J W P W T A T K S C P S T N F O W E X E R C I S E
H U V A H Y Q V R O J P B P P A T L F W U K E Q R W W I U K
S N I Z T E Q A M N G V K B Y I N P E A R A C H E H O A O D
V M T O Y J W C L G Y S U K V N E L E M F M G K V J Y V C K
R S A N Y E P U U U I U C Y R K E N P B G E W E V P N P J F
E E M M N X O X I E D N G Z H I D L E W H D F P B N C L V H
F Q I F Y A Y V A D V E V S Q L L S U Y L I R X B A N X L D
J Y N B L M O S A E R T L Z Z L E Y S G P C U T Z X M N L J
D E S S I I K N J P J F K B K E Y I F K R I I M C J H E P Y
E M N X L N Q E T R G O S T N R G D P L E N T B M G E A O H
P F E T X A O E A E I Q G K V F O L T B S E B V B H Y R A E
I F T F A T L Z I S T N A O P O B H B R C T S A A J T D L A
R B O L A I P E Q S V K U G I O D N L C R Z K R B C H Z P D
A J P H E O Z C T O Q B Z N L S V S U O I L X W X Y C A X A
K Y R O W N X R H R B T E L L Y Z V L T P M A B N I C I Y C
P X U S I R C V F I Z U C U K R Y A S T T Z E Q J C G O N H
X F N P T O I O H B C W Y R I I C E G O I N Q I X D M N Q E
Q E N I J O H I U C N K A Q B N O Z M N O R O Y L P L S V L
B V Y T V M O F J G X A E T X G V B Z B N E K W Y P I Y F Z
E E N A V G H G D V H K B N E E D X Q A V D U O E Y L P W S
M R O L Z C B Y X P W I C N P R T X H L L M K H S Q P A T I
B F S B E V A C G Z U J N D W O F H K L A G Y H Z Q Q I F T
H A E U L T N O G G D H E G L M X B J N O L K X J H G N X T
A K N S M E D P K S S F V D C H E A V S T O M A C H A C H E
R O I D U L A V E G E T A B L E S Y X M A Q K U V V V V K S
V X W P A I G X A M V V C U F O U D V T L V D V H B R U Y W
P O J F T I E G F S F E S O R E T H R O A T Y E A L E Y M I
W J D N A M D T Y T E Y R C O U G H S Y R U P F N Q O G C D
T B N U T C L O R D H Q I D C J X U J G O O C S H U W L G J

Examination Room Tongue Depressor Prescription

Pill

Stomach Ache

Sore Throat

Chickenpox

Fruit

Pain Killer

Cough Syrup

Cotton Ball

Pain

Vegetables

Runny Nose

Medicine

Headache

Exercise

Vitamins

Coughing

Vaccine

Ear Ache

Syringe

Hospital

Bandage

Sneeze

Band-Aid

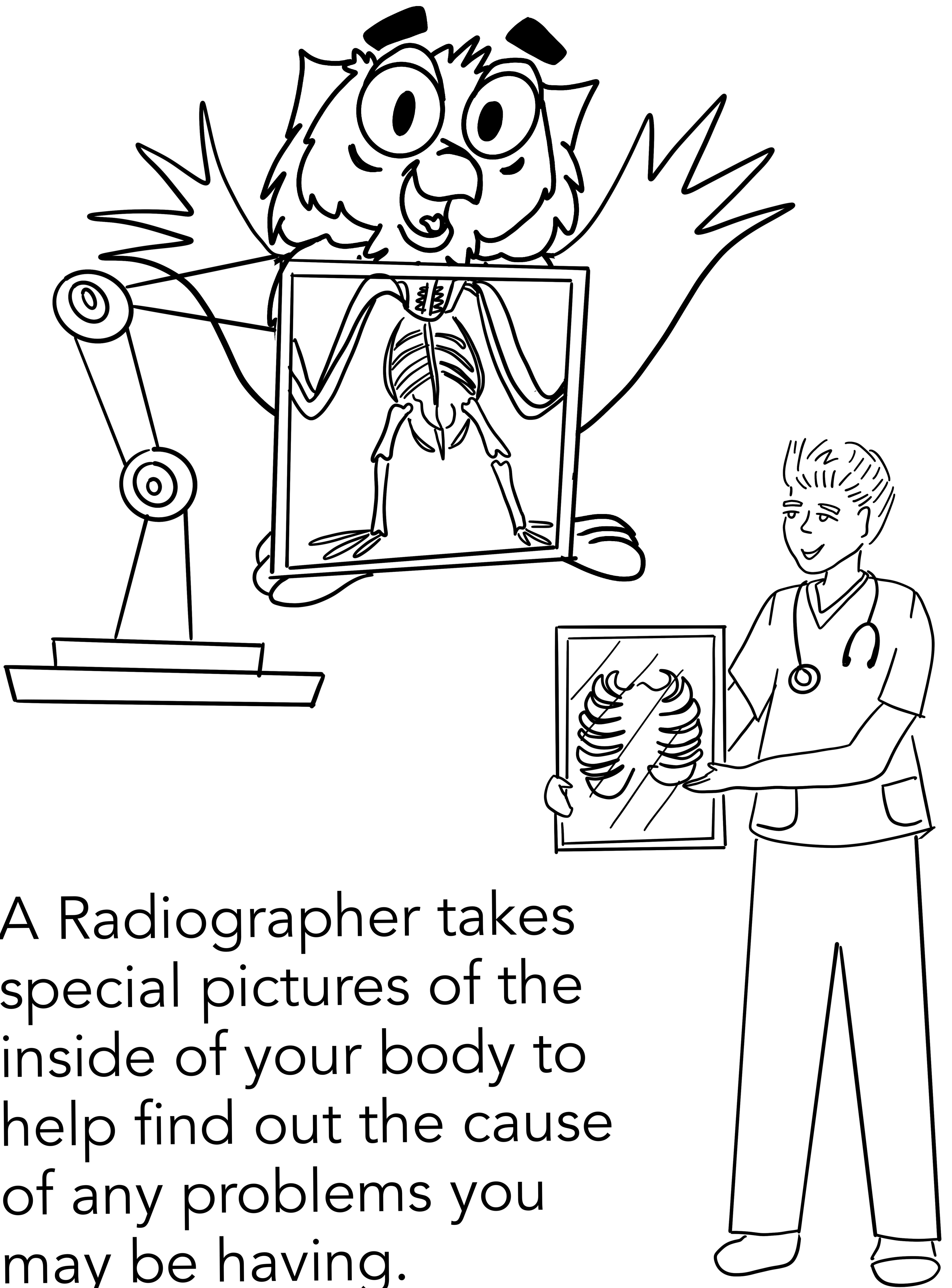
Needle

Gauze

Fever

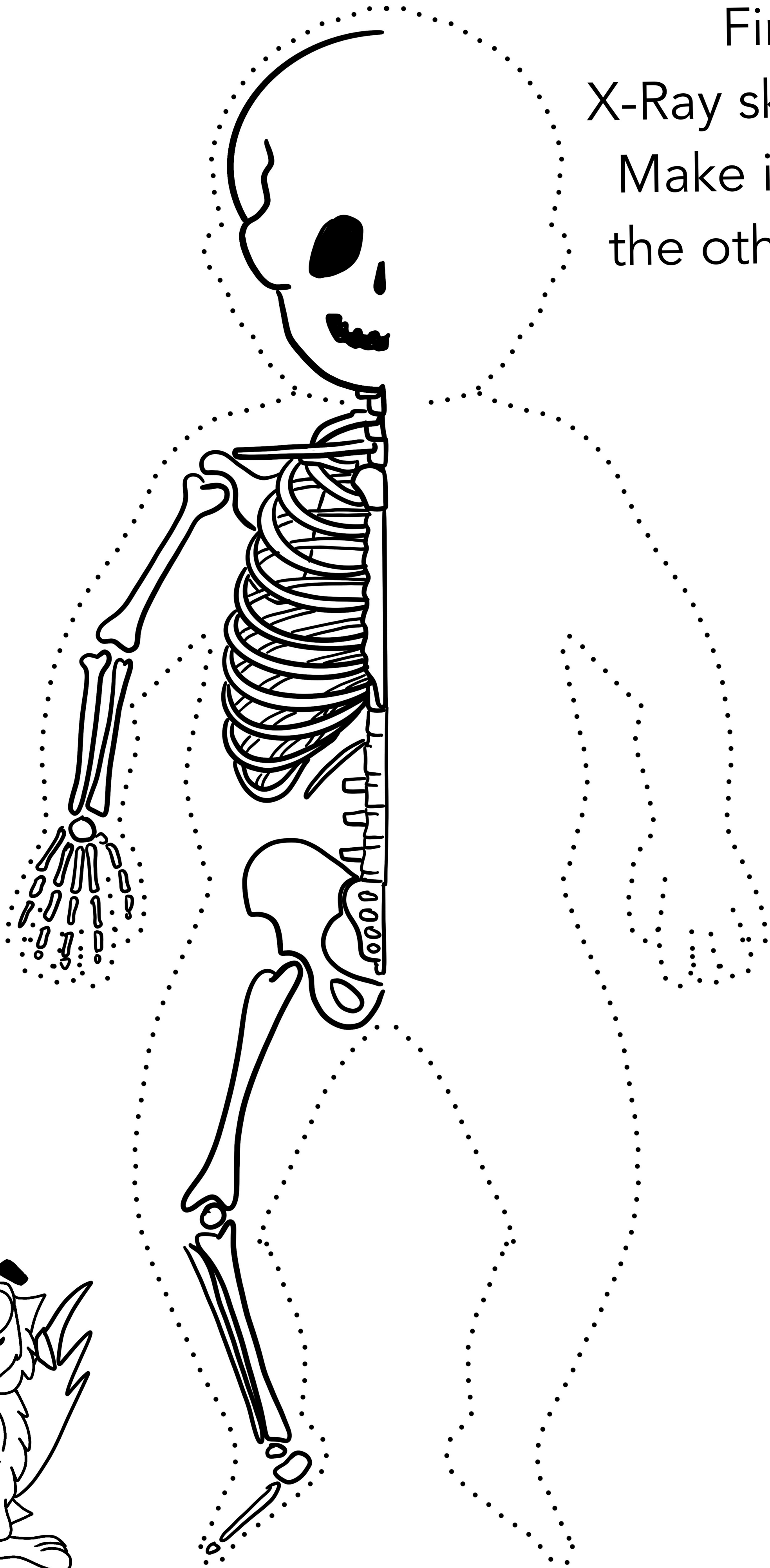
Water





A Radiographer takes special pictures of the inside of your body to help find out the cause of any problems you may be having.

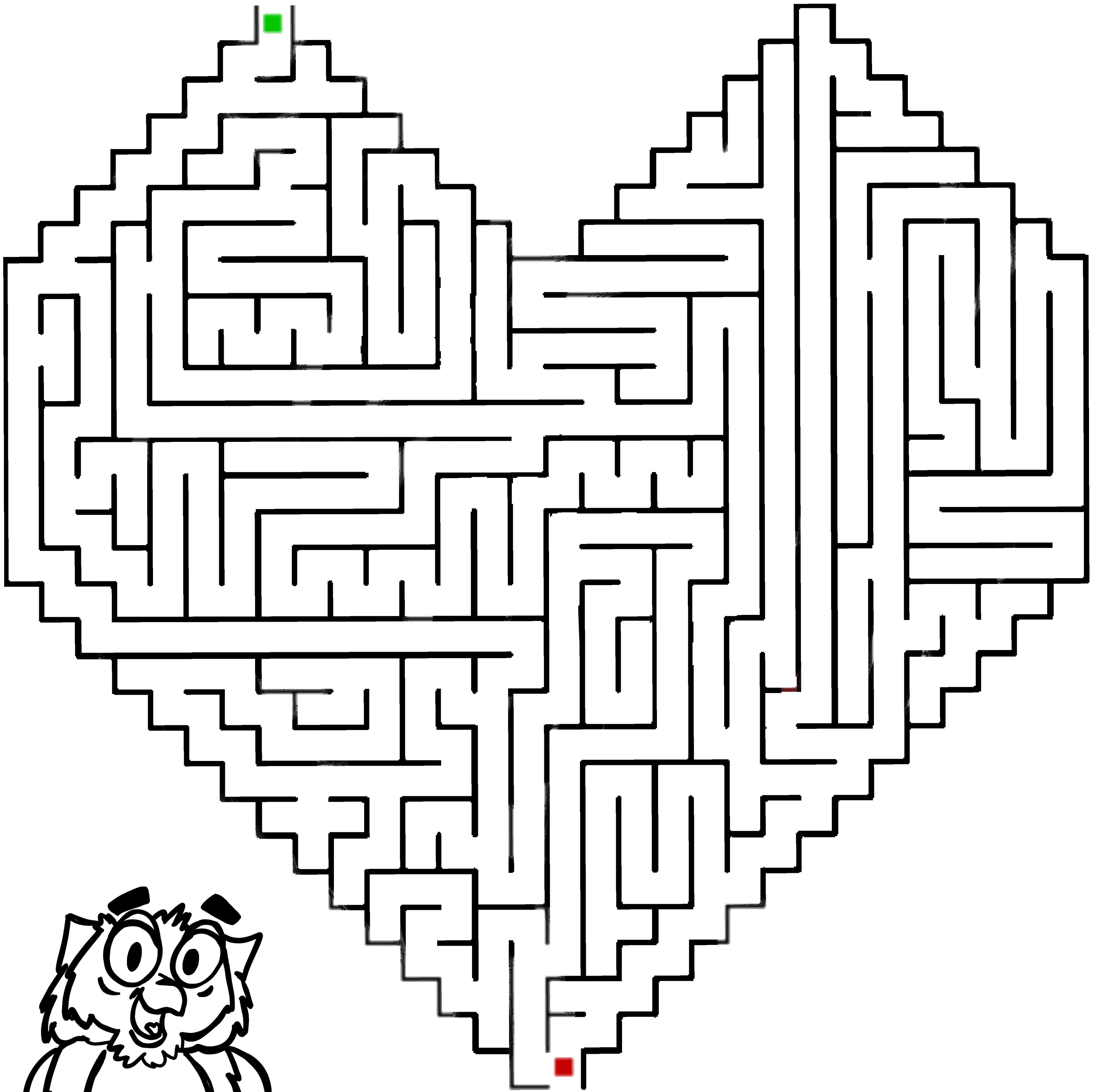
Finish the
X-Ray skeleton!
Make it match
the other side!



A social worker talks with adults and children about their life and helps them get the right help they need to make things better.

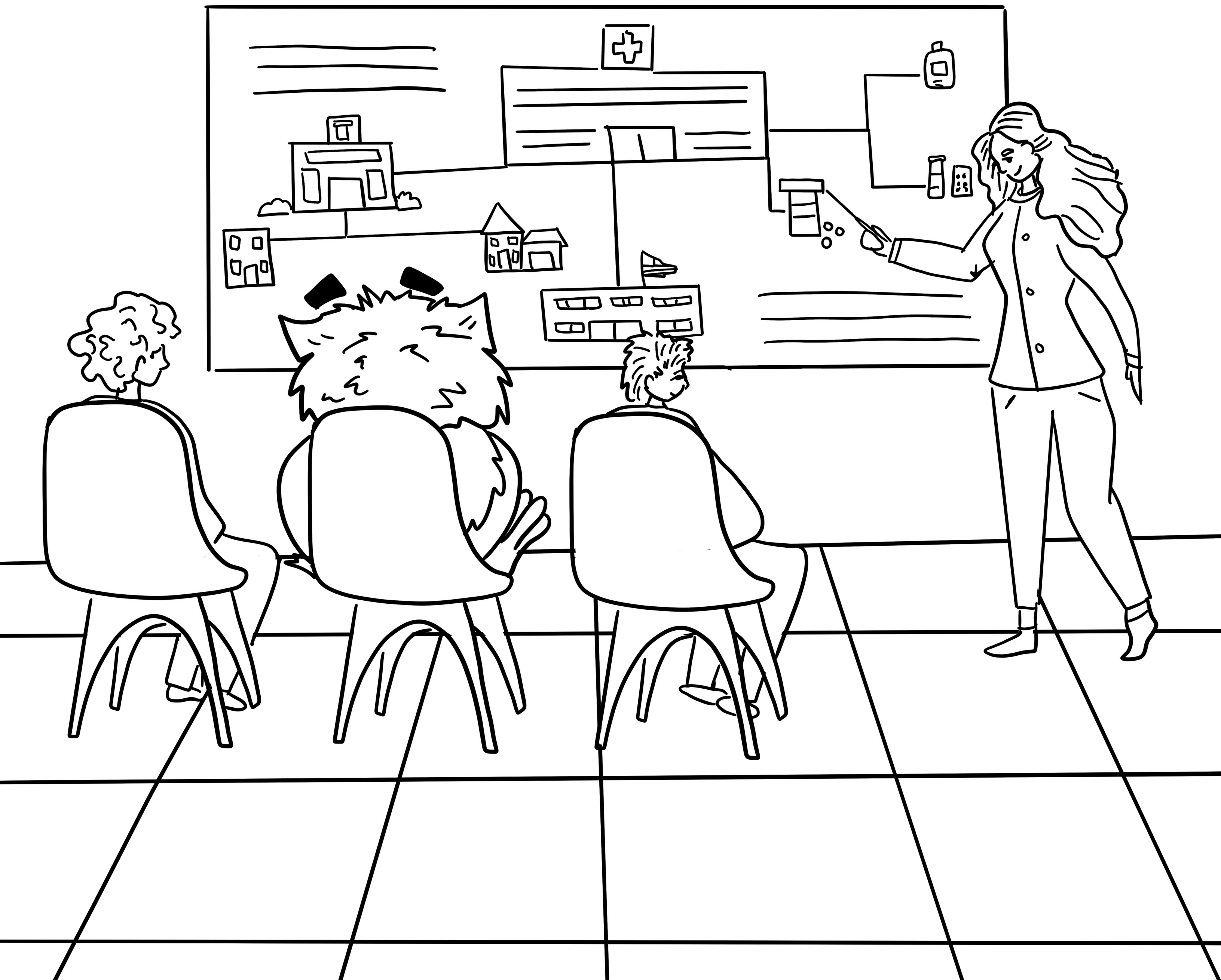


A social worker can help
you navigate your heart.



Maze solution is
on the back cover!

In health sciences you learn the many aspects of how the healthcare system works and can work in many areas in healthcare organizations and the community.



Connect the matching
test tubes & beakers



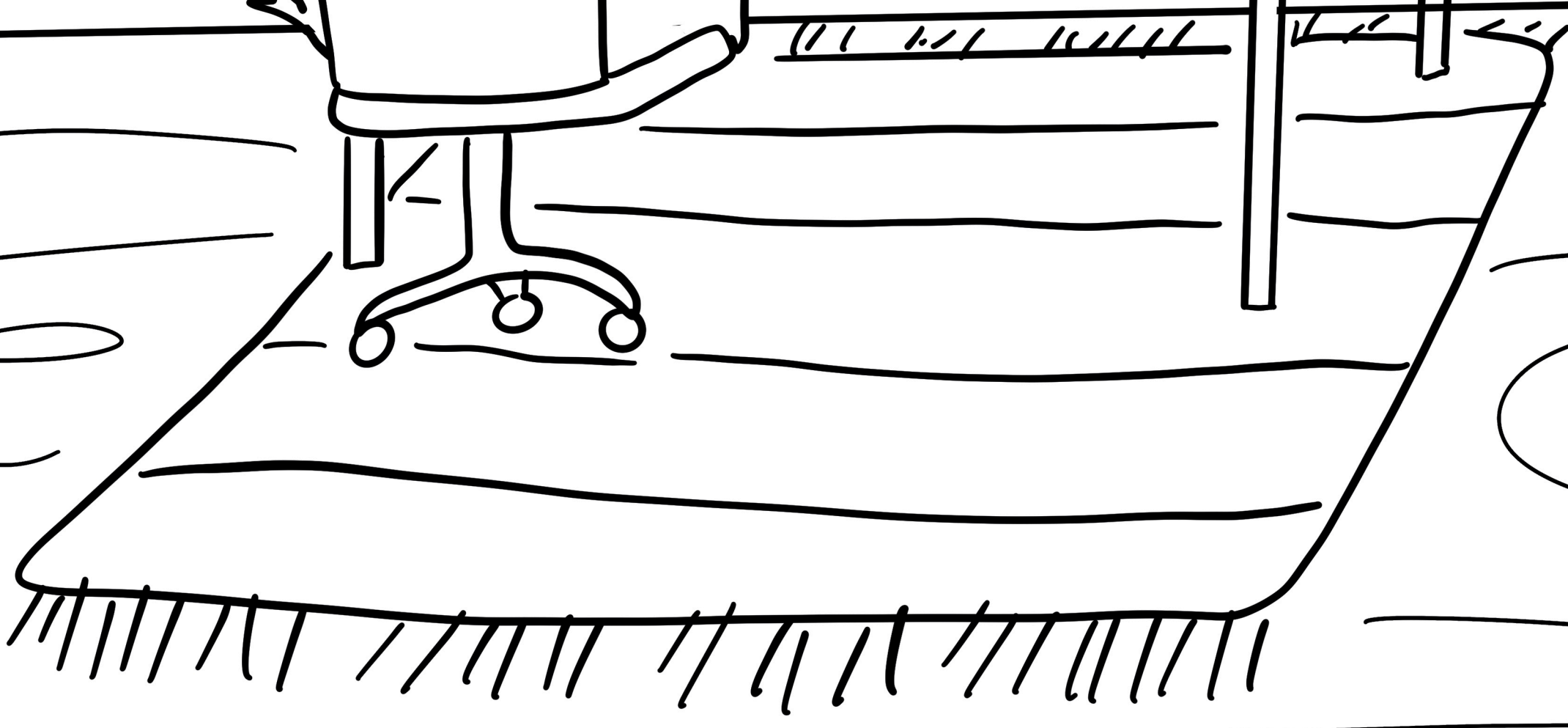
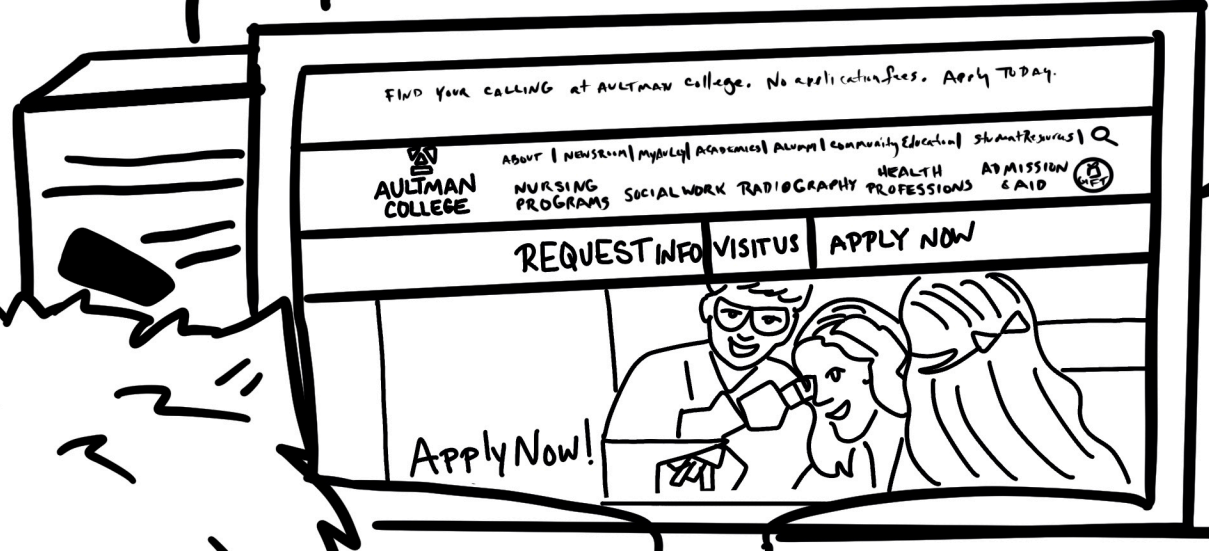
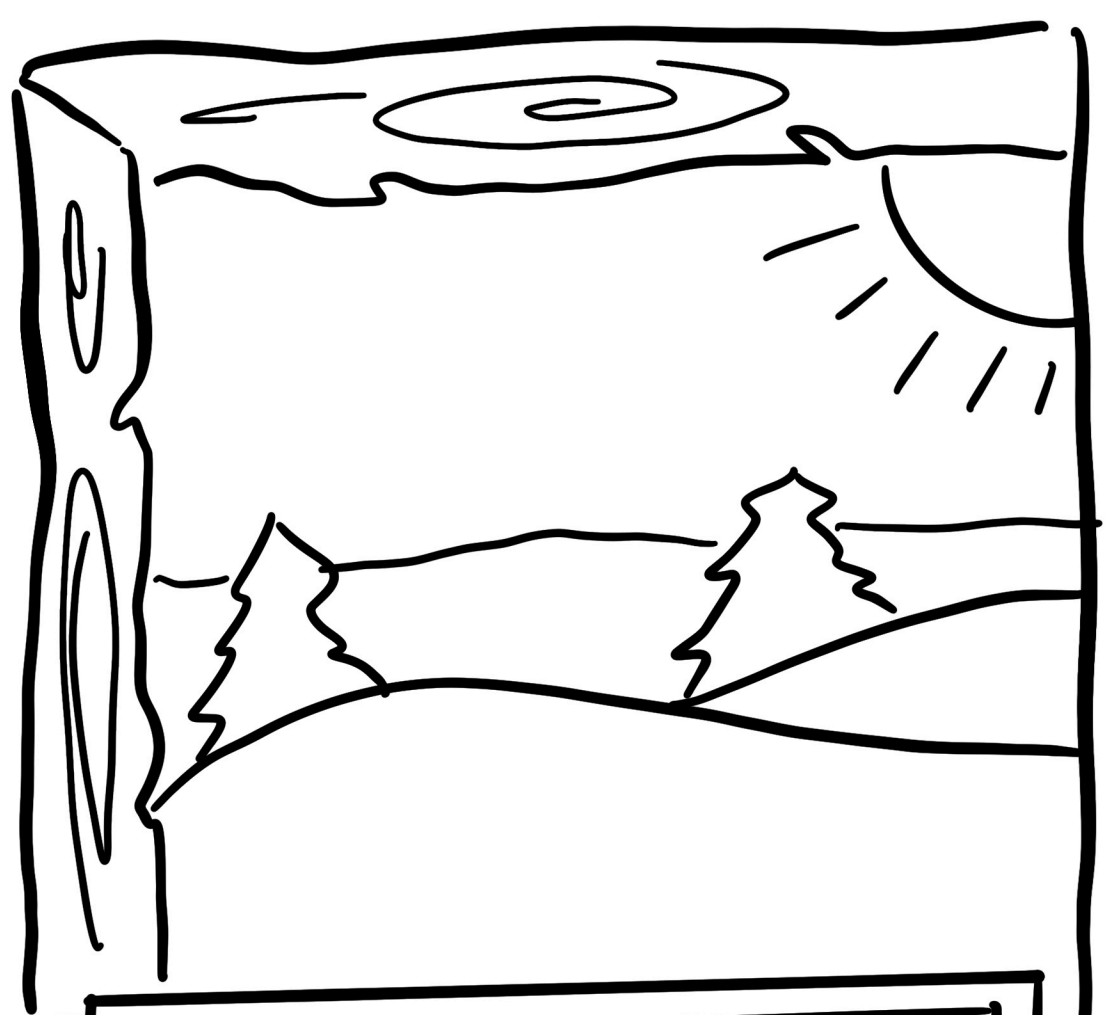
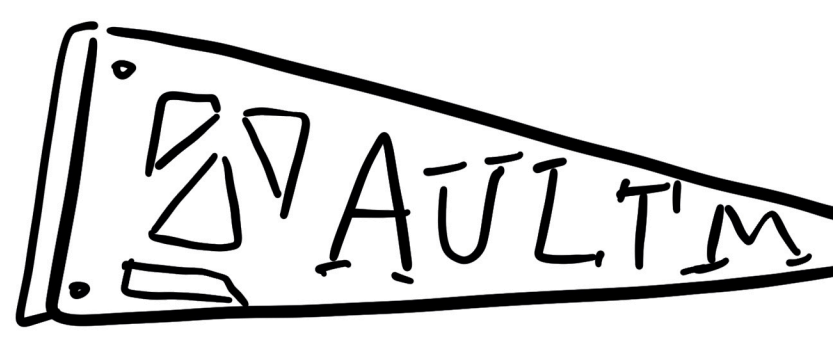
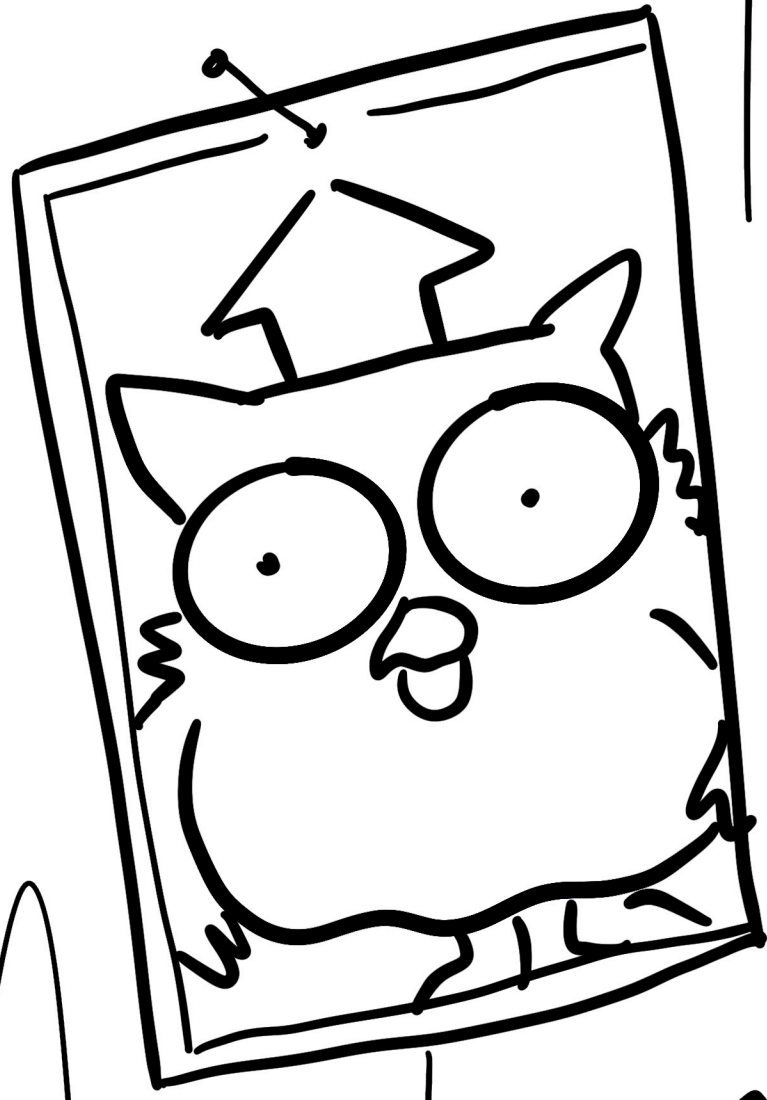
Medical assistants are helpers in doctor's offices that collect information about why you need to see the doctor.



They might also take your height, weight, temperature, and more!

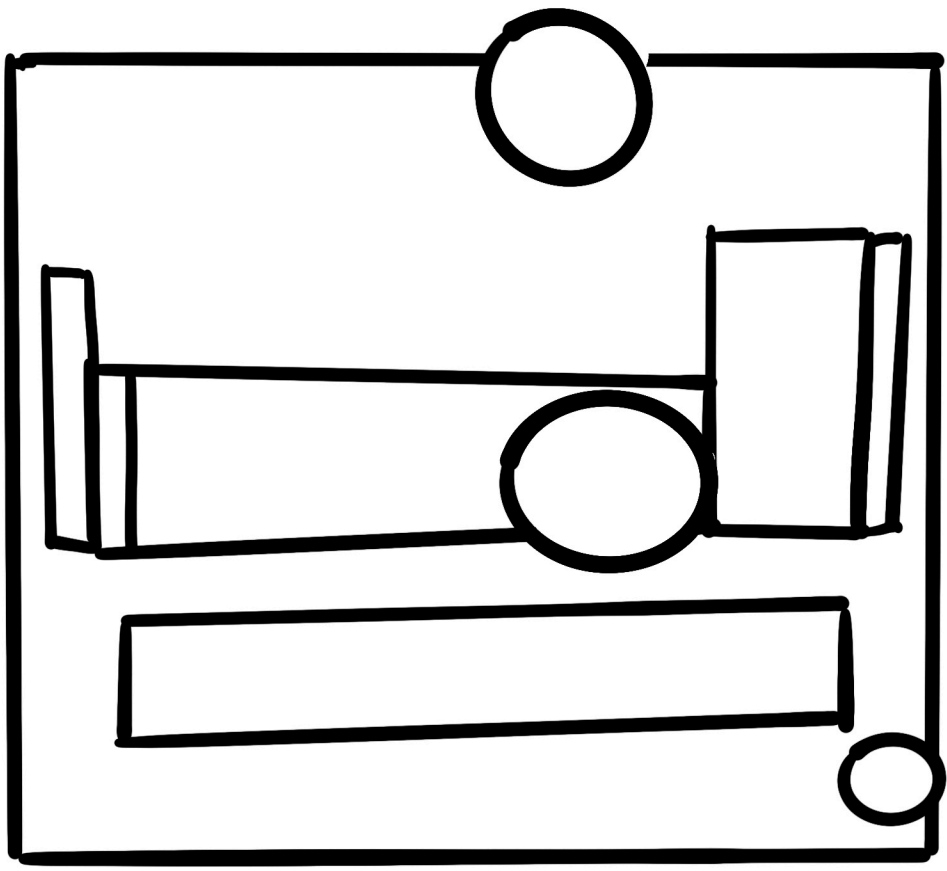


Find the 12 differences between the pictures!

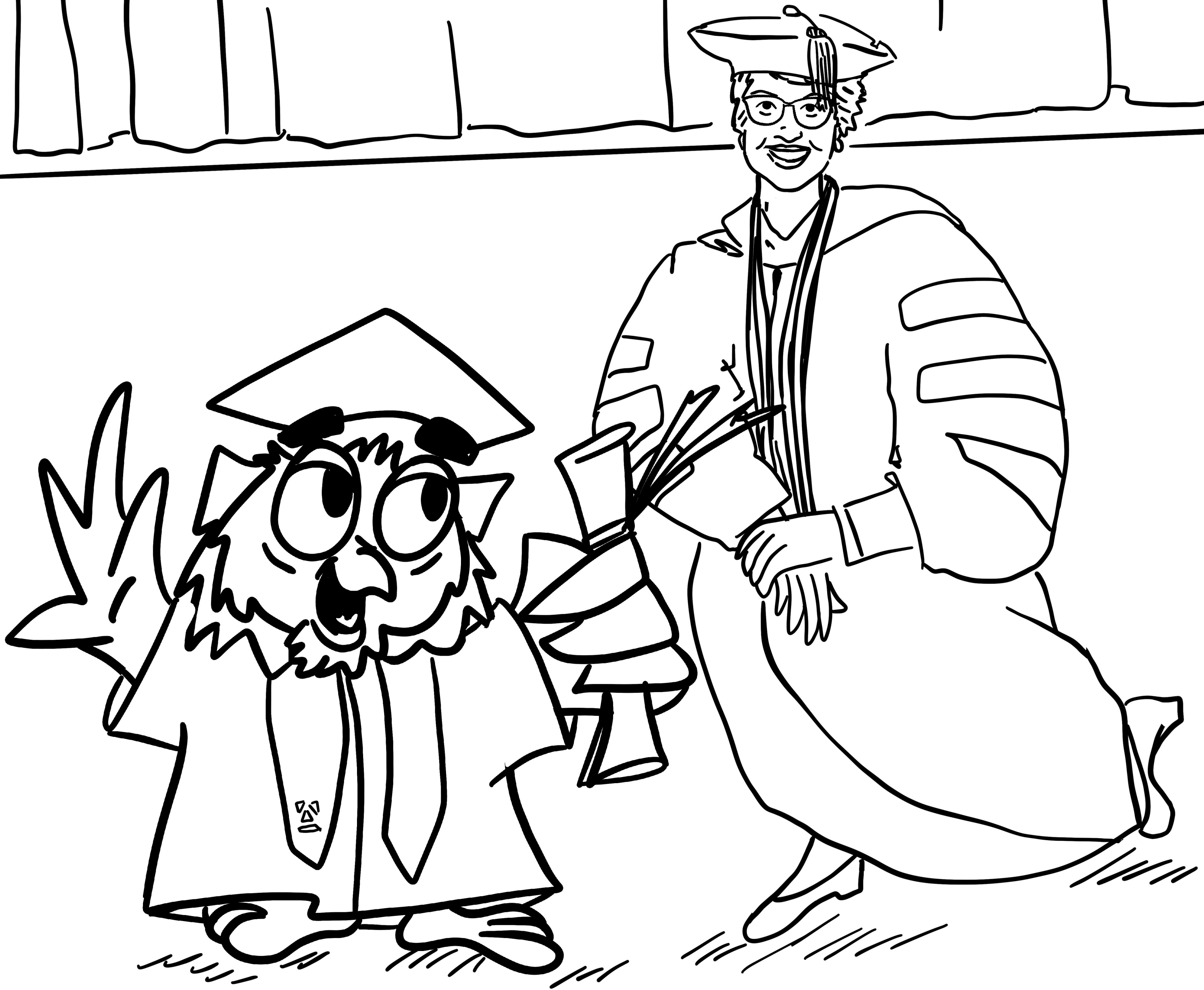


Congratulations
We are pleased
to inform you
of your
acceptance
to Aultman
College!
We
look forward
to seeing you
on campus!

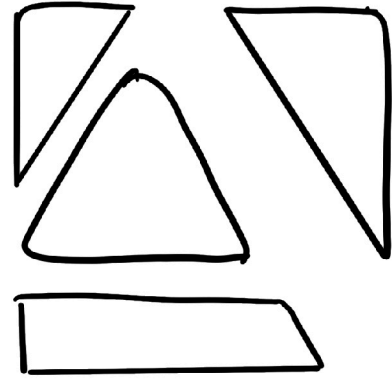




CONGRATULATIONS
GRADUATES



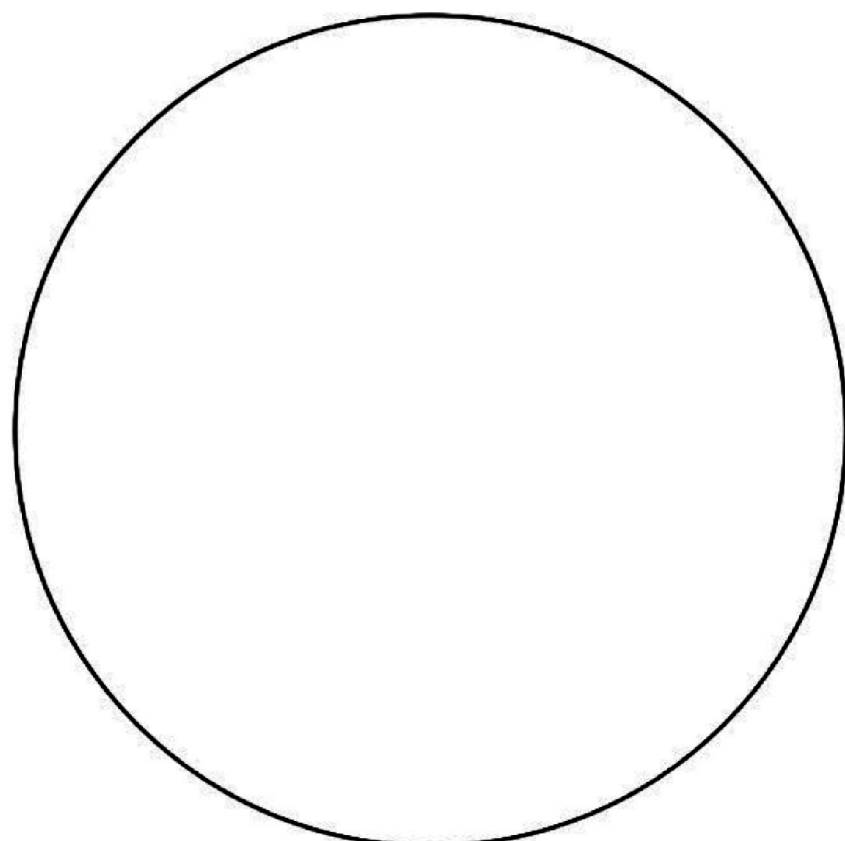
Diploma of Graduation



AULTMAN
COLLEGE

this certifies that

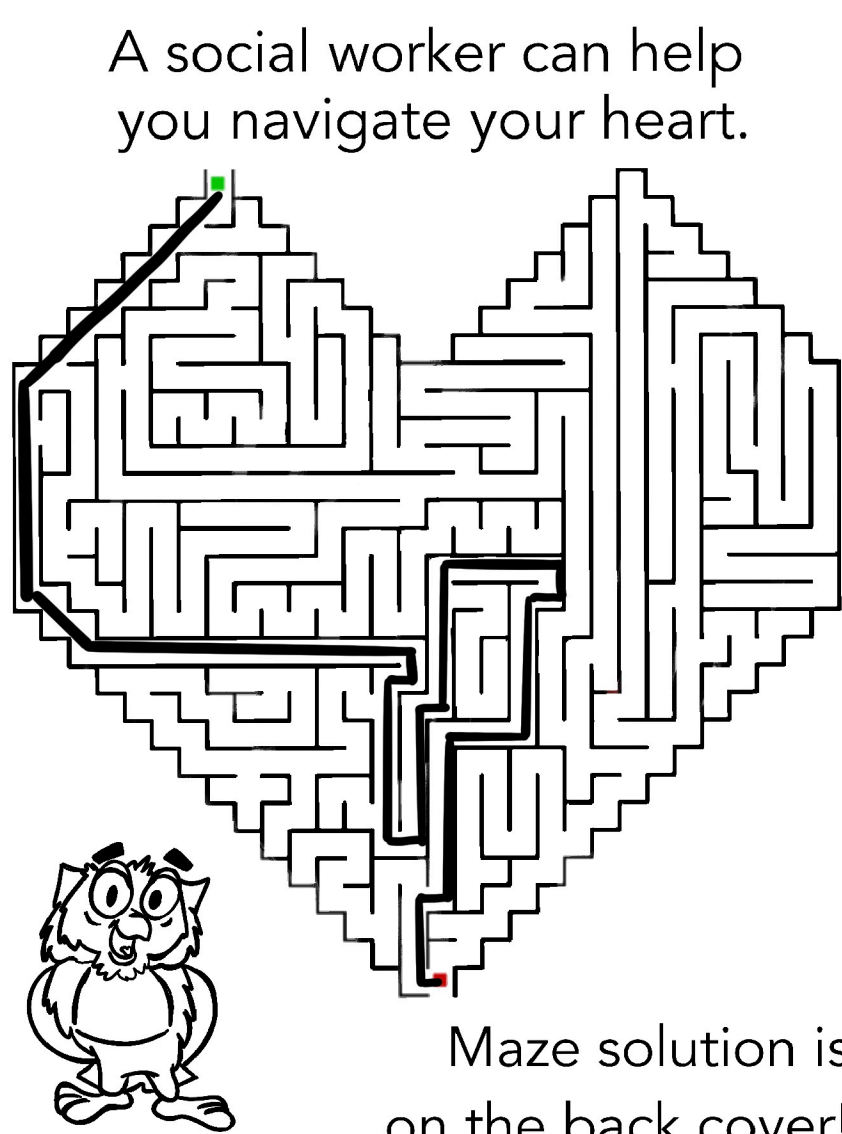
has completed the course of study



ABOUT AULTMAN COLLEGE

Aultman College has a proud history of educating health care professionals for more than 120 years. As northeast Ohio's only health system affiliated institution of higher learning, our goal is to prepare exceptional health care professionals who positively impact society. Located in Canton, Ohio, approximately one hour from Cleveland and Youngstown, we share a campus with Aultman Hospital, Stark County's largest hospital and employer and the area's only Magnet designated facility. As part of this renowned health system, our students receive unparalleled clinical and learning experiences.

The college awards associate degrees in radiography, nursing and health sciences; bachelor's degrees in nursing, social work, and health sciences; the BSN completion program (RN to BSN); a certificate in medical assisting; the College Credit Plus program for high school students; and community education courses. Nearly 350 full- and part-time students are enrolled in the college. To learn more, call 330.363.6347 for an appointment to visit our campus.



Page 12 key



Find the 12 differences between the pictures!

Page 16 key